

SQA Results

NIGEL COTTER, DHT NOV



Terminology Used

Levels

- The *level* is determined the difficulty of the course
- The *levels* sit within the SCQF (Scottish Credit & Qualifications Framework)
- We traditionally have not talked about levels in schools.
- The courses we are most familiar with are at the following levels
 - National 4 Level 4
 - National 5 Level 5
 - Higher Level 6
 - Advanced Higher Level 7

(Scottish Credit & Qualifications Framework)

[illegible]

SCQF Levels and Tariff Points

- Courses at the same level have a similar level of challenge
- Some are *Graded* (eg Nat 5 A, B, C, etc)
- Others ungraded (eg NPA is Pass or Fail)
- Ungraded pass is equivalent to a Grade C at the same level
- Qualifications have a number of *Tariff Points* based on the SCQF level and the amount of content
 - 1 point is approx. equal to 10 hours of learning
- These are not the same as UCAS points
- These tariff points are one way of measuring school performance

Other ways to measure school performance

We also look at the number of pupils who:

- have achieved a given number of qualifications
- At a given at each level
- At key stages (end of S4, S5 and S5)

Typically, we would look at the number of pupils achieving:

- 5 qualifications at Level 3 (5@3)
- 5 qualifications at Level 4 (5@4)
- 5 qualifications at Level 6 (5@5)

Different performance schemes will use different combinations of these (eg 1@5, 3@5, 5@5, etc)

Measuring School Performance

These ways of measuring performance and attainment have pros and cons.

Some very worthwhile qualifications do not sit within the SCQF and do not contribute to published attainment data.

None of this information gives any indication of the '*value added*' by a school, simply the result at these key stages.

The Scottish Government measure school performance in the following ways and takes a range of factors into account when reviewing performance. These figures are not finalised until around February 2025 when the destination details have been processed.

- Total tariff points young people achieve at the point of leaving the school
- Positive Destinations on leaving school

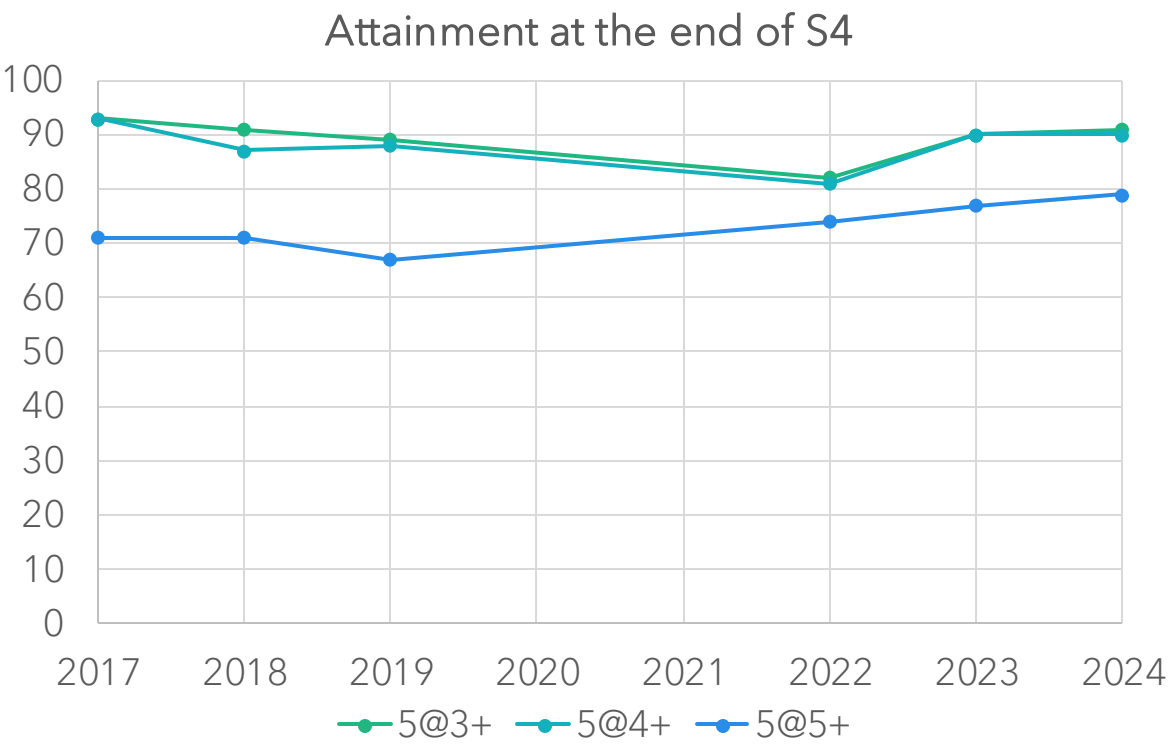
COVID Results

- During sessions 2019/20 and 2020/21, alternative assessment methodologies were used to award SQA results
- The pattern of results was atypical to usual
- These years have been disregarded as a meaningful comparison is not feasible

SQA Results

S4	2017	2018	2019	2022	2023	2024
5@3+	93	91	89	82	90	91
5@4+	93	87	88	81	90	90
5@5+	71	71	67	74	77	79

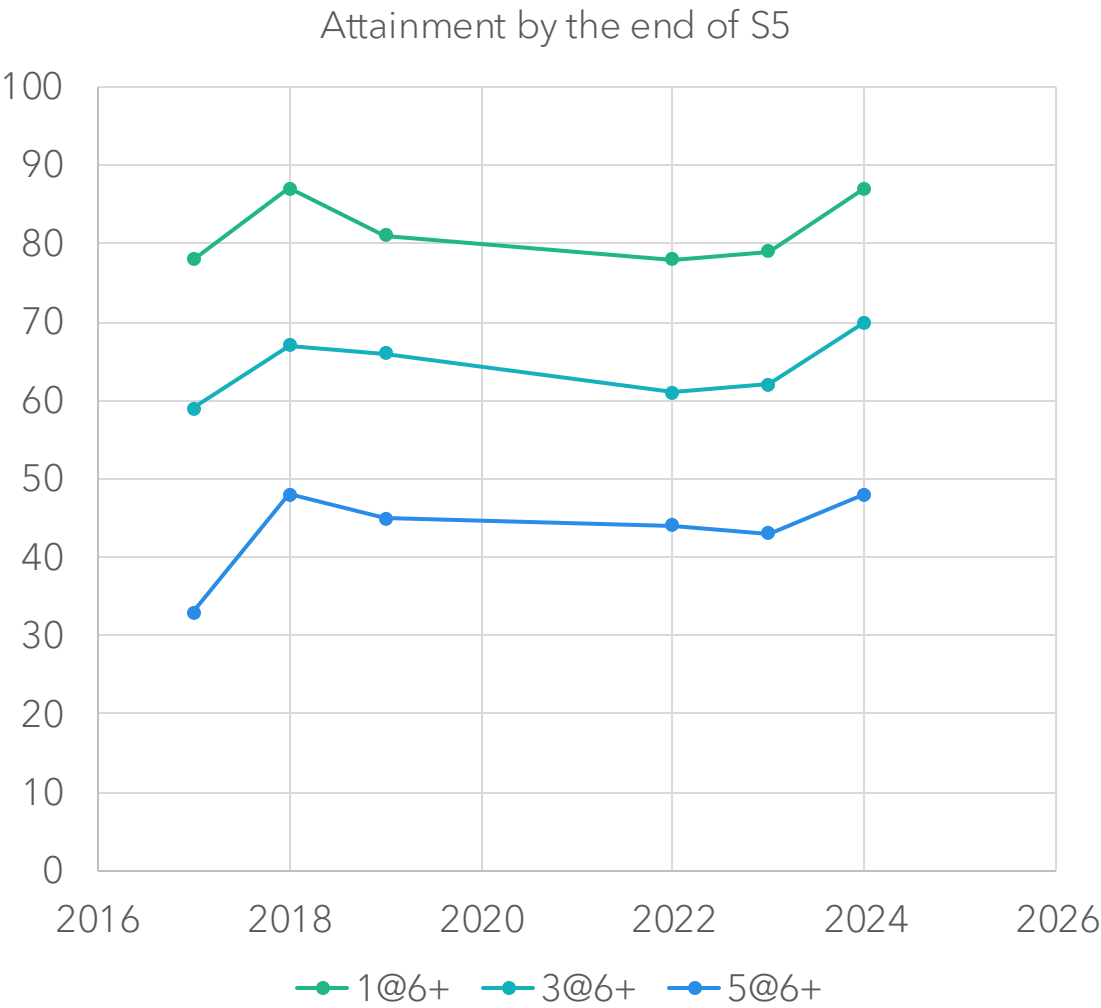
- Counting passes at A-C
- 2023 showed significant improvement in 5@L4 and 5@L3, this has been maintained
- 5 @ Level 5 strongest in recent records



SQA Results

By the end of S5	2017	2018	2019	2022	2023	2024
1@6+	78	87	81	78	79	87
3@6+	59	67	66	61	62	70
5@6+	33	48	45	44	43	48

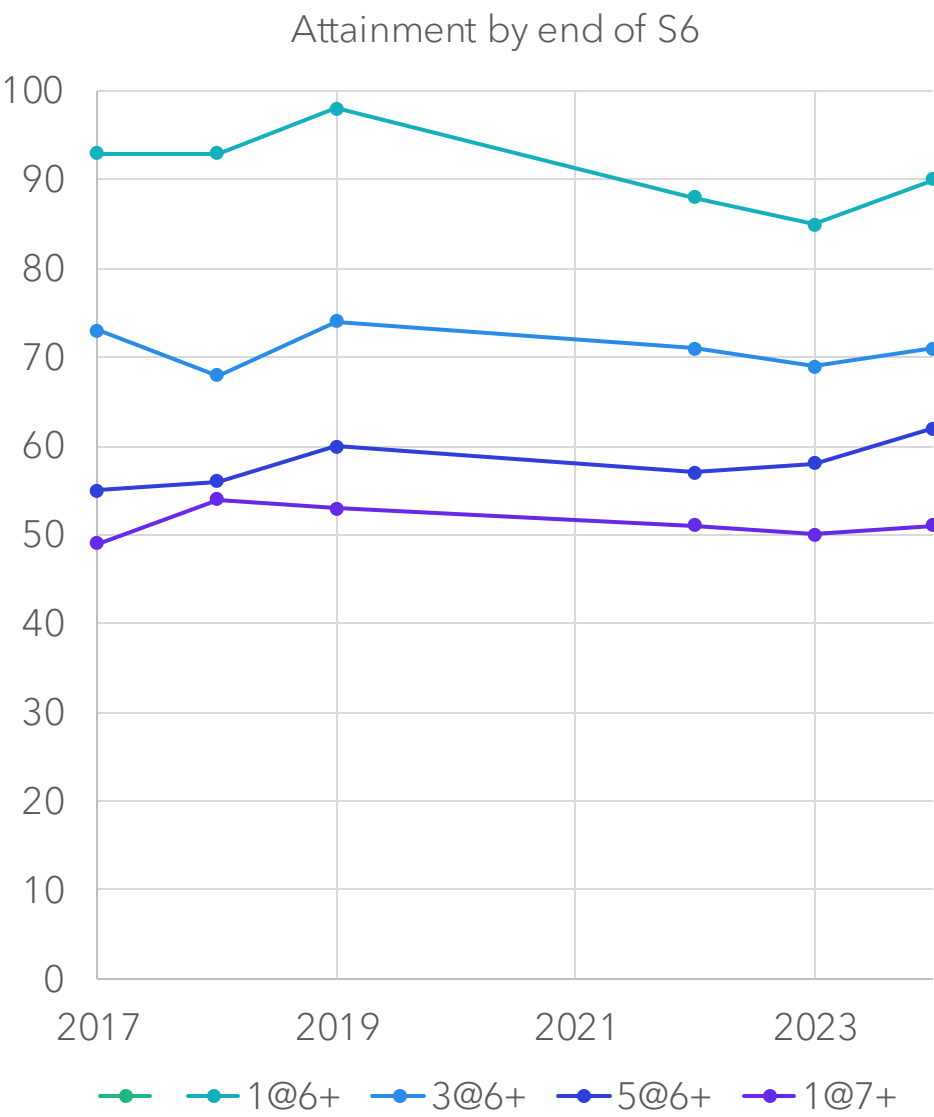
- Improvements in all categories
- Strongest results since 2018



SQA Results

S6	2017	2018	2019	2022	2023	2024
1 @6+	93	93	98	88	85	90
3@6+	73	68	74	71	69	71
5@6+	55	56	60	57	58	62
1@7+	49	54	53	55	58	63

- 5 level 6 qualifications highest in recent years
- Year on year drop in 1@L6 by end of S6



SQA Results

	S4	2017	2018	2019	2022	2023	2024
S4	5@3+	93	91	89	82	90	91
	5@4+	93	87	88	81	90	90
	5@5+	71	71	67	74	77	79
S5	1@6+	78	87	81	78	79	87
	3@6+	59	67	66	61	62	70
	5@6+	33	48	45	44	43	48
S6	1@6+	93	93	98	88	85	90
	3@6+	73	68	74	71	69	71
	5@6+	55	56	60	57	58	62
	1@7+	49	54	53	51	50	51

- S4 Results in 2023 one of the strongest for many years
- This has carried forward into strong S5 results
- We would anticipate strong S4 and S6 results in May 2025 on the basis of this data

Virtual Comparator School

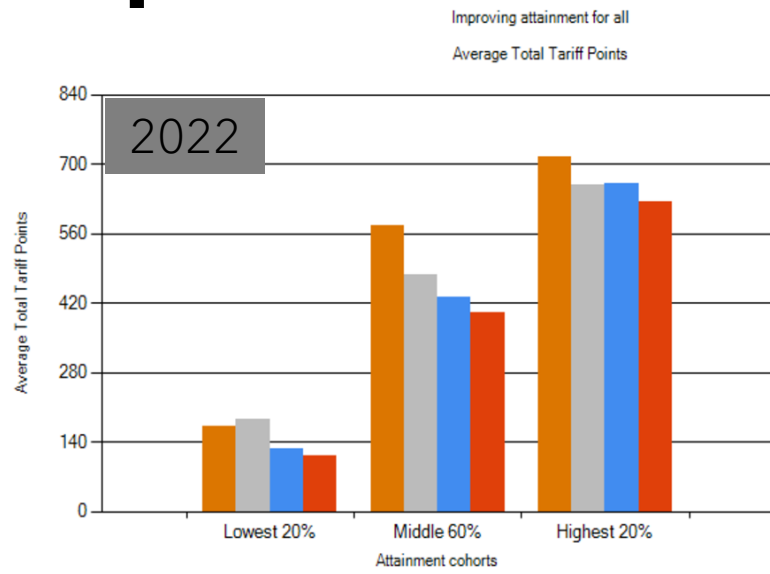
We are compared against a virtual school which has the following characteristics:

- 10 pupils from across Scotland are matched to each one of ours
- These pupils are matched according to:
 - Gender
 - Additional Support Needs
 - Stage of leaving school
 - Social context (SIMD)

Literacy and Numeracy Levels



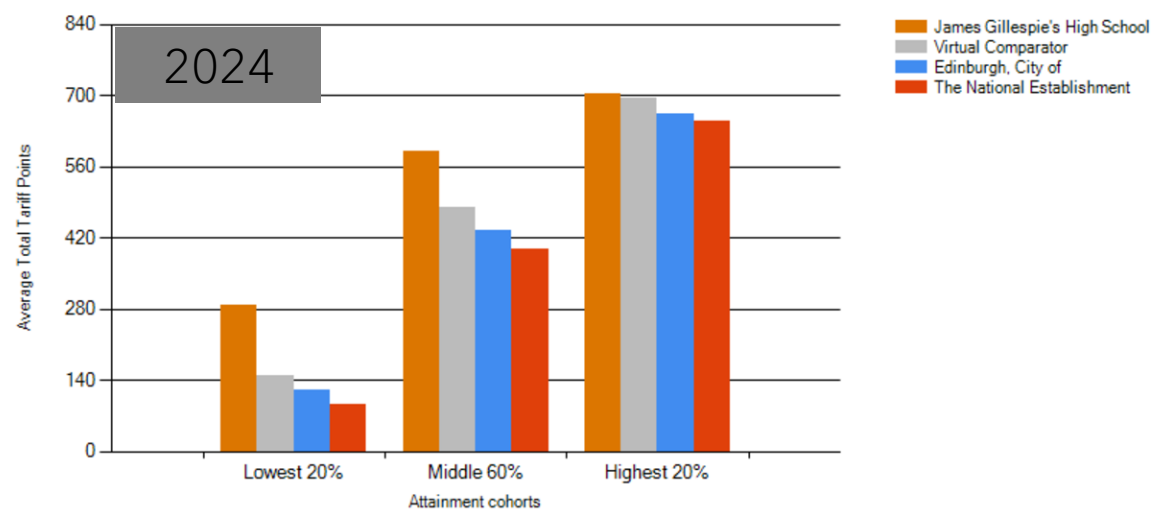
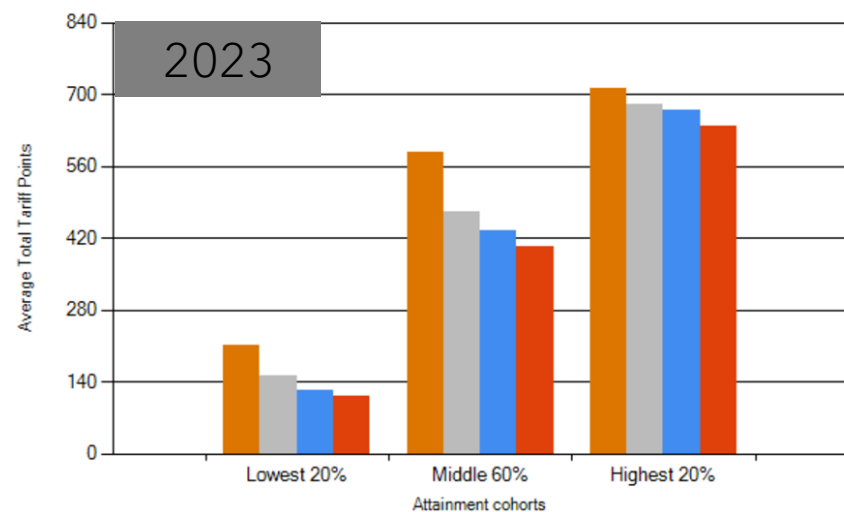
Improvement Attainment for All



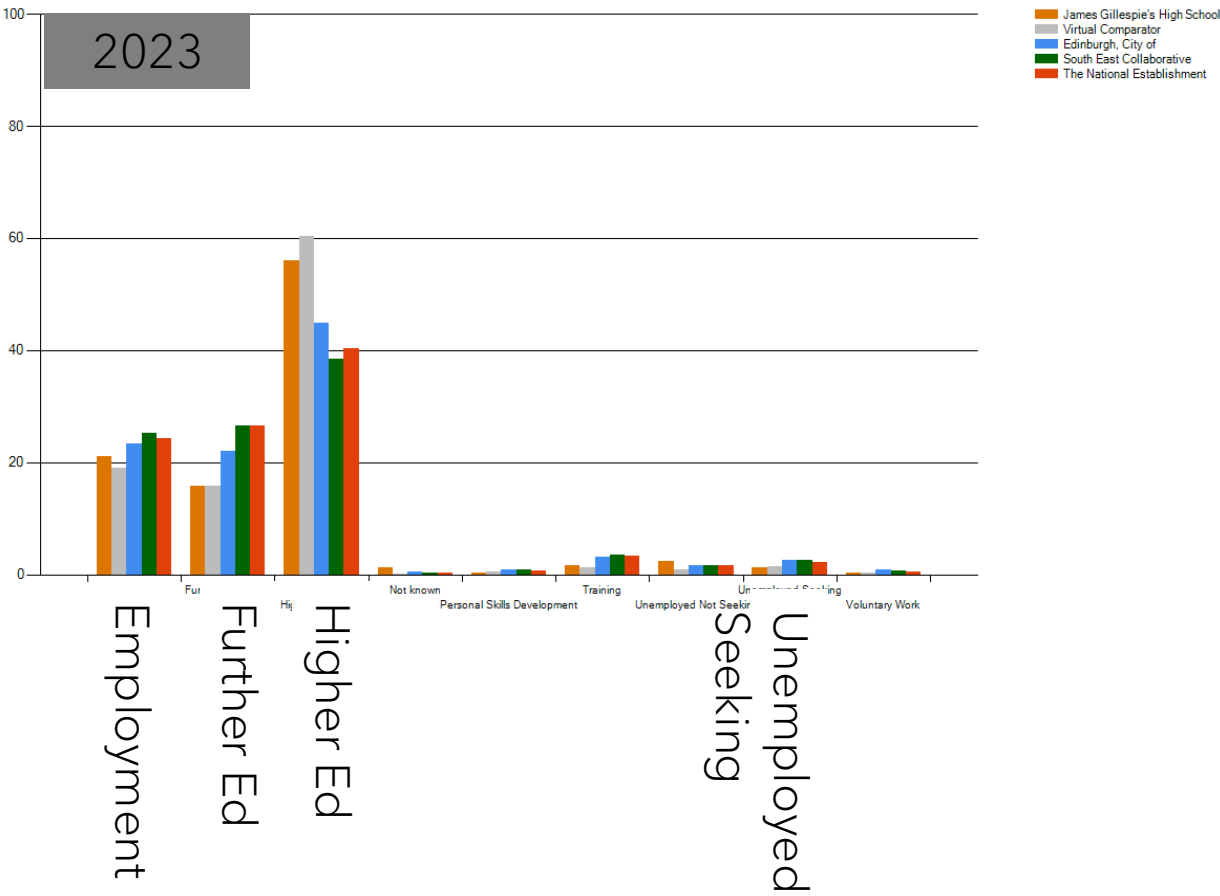
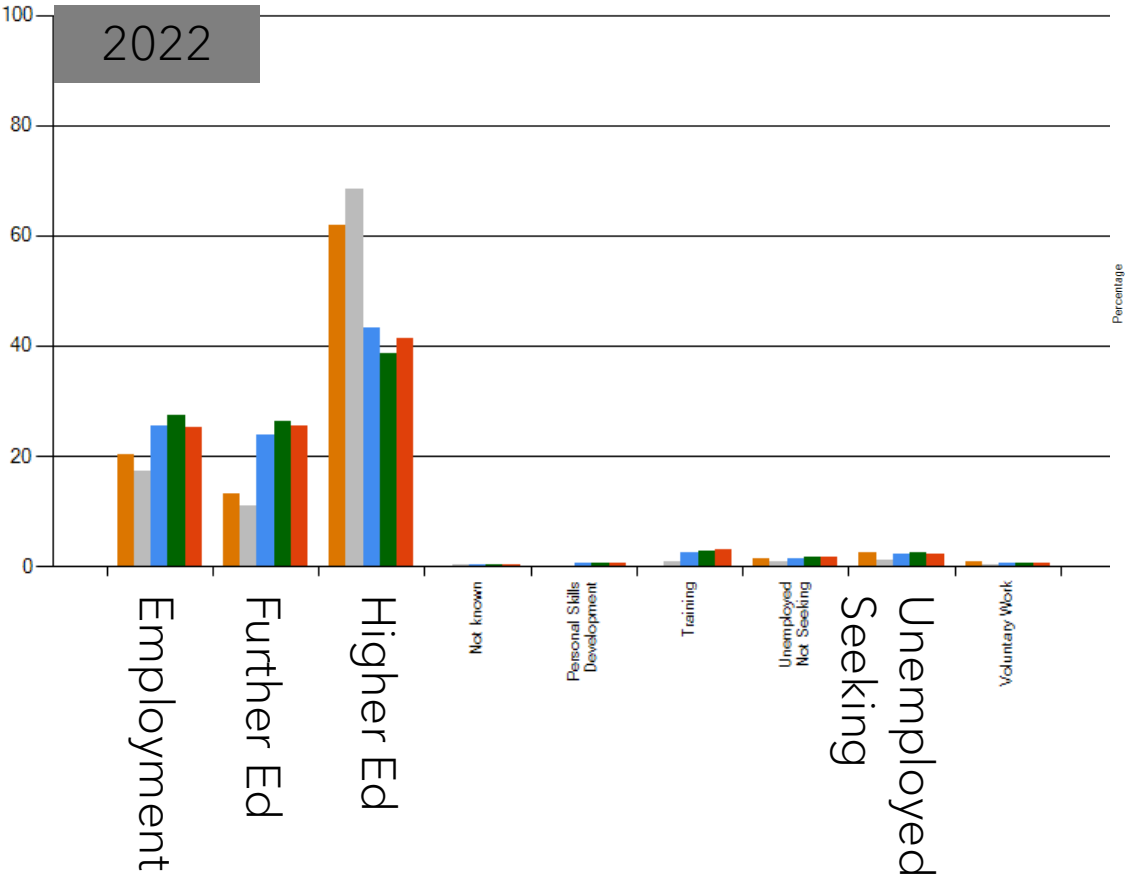
A year group is split into 3 categories:

- Highest 20% attaining by tariff points
- Middle 60% attaining by tariff points
- Lowest 20% attaining by tariff points

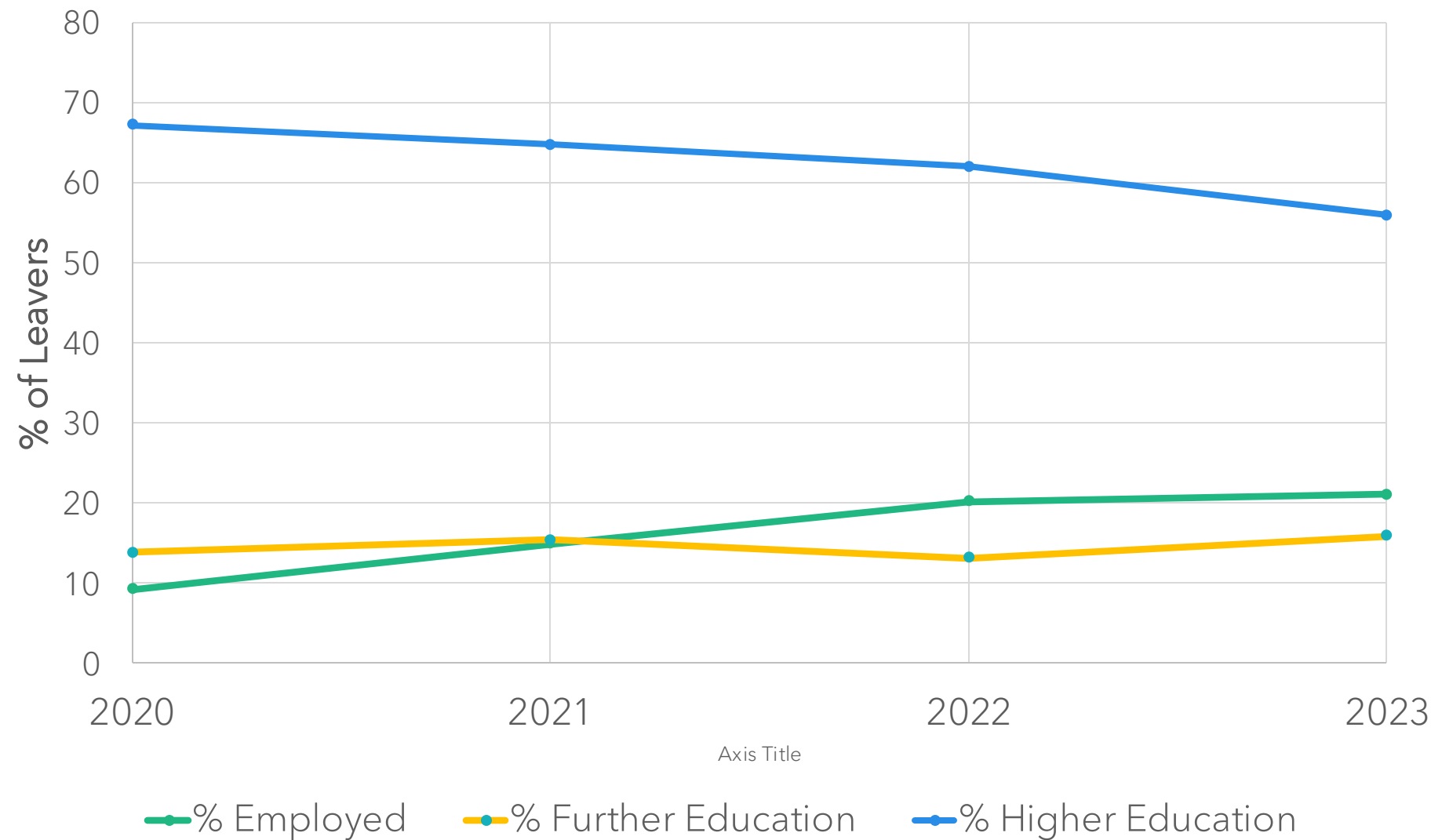
- JGHS typically performs well with Middle 60% and Top 20%
- Last 2 years significant progress has been made with increasing attainment for lowest 20%
- This can be life changing for these young people



Post School Destinations



Post School Destinations 2022/23



- Trends
- increasing employment
- Decreasing University
- Pattern is repeated in the *Virtual Comparator*

Post School Destinations

