

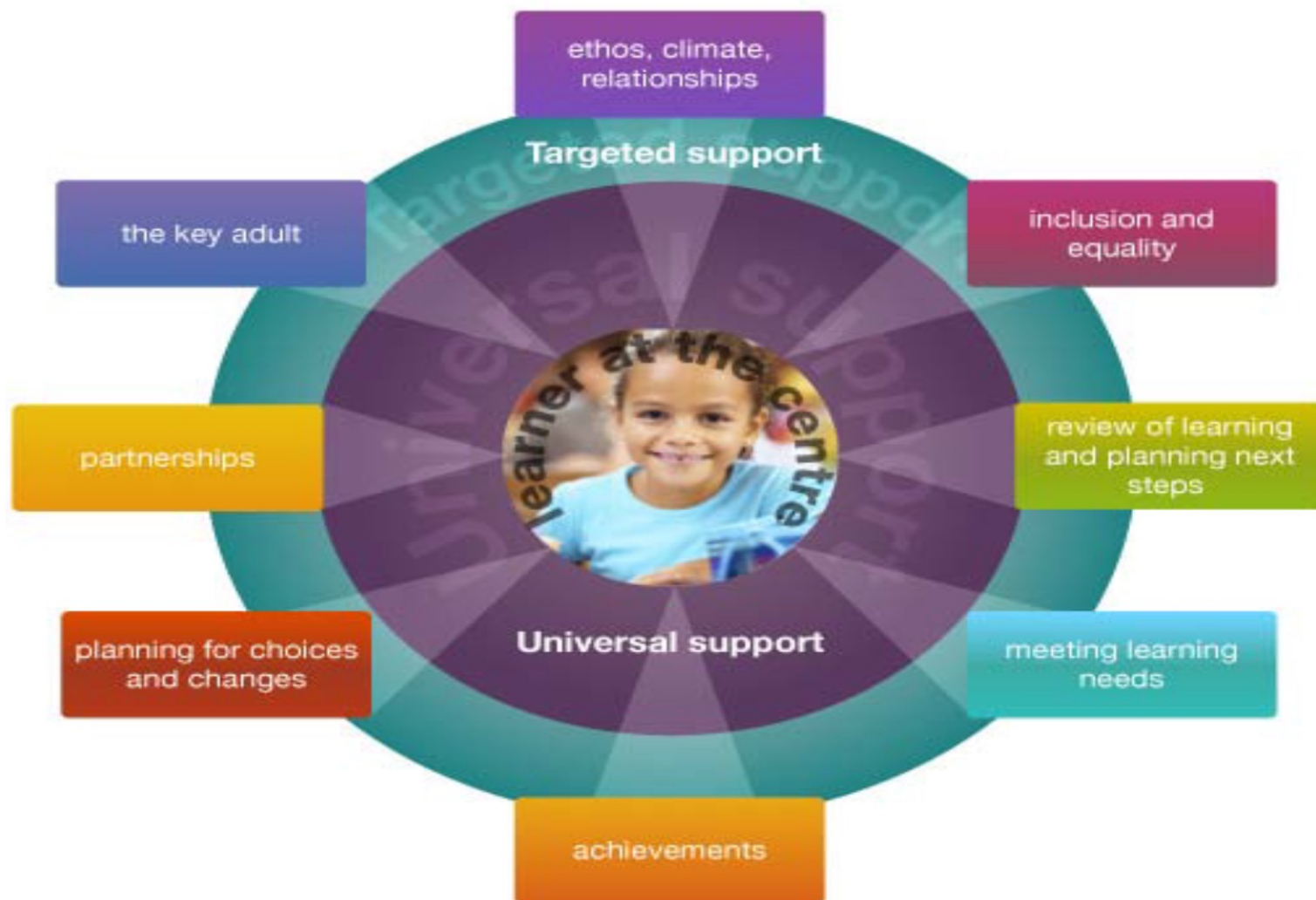
# SUPPORTING OUR PUPILS



JGHS has a community of over 1500 students.

Each pupil has a:

- Key Adult (development of the registration teacher role)
- Pupil Support Leader (formerly known as SFPL/Guidance)
- Access to Support for Learning
- Community Head: Depute Head Teacher



# ROLE OF THE KEY ADULT



All pupils have the opportunity to discuss their learning with a Key Adult who knows them well, helping them to set appropriate next steps.

The Key Adult has a holistic overview of learning and personal development of each child and young person.





## JGHS Community Structure from August 2021

**Lauder**

- Community Head: **Deirdre O'Brien**
- PSL for all year groups ending in L1/2/3: **Leanne McQuade/Caitlin Garrett**
- PSL for all year groups ending in L4/5/6: **Nikki Graham**
- SFL Teacher: **Leesa Fallon**

**Roslin**

- Community Head: **Jeff Warden**
- PSL for all year groups ending in R1/2/3: **Bryan McPhail**
- PSL for all year groups ending in R4/5/6: **Cait Pearce**
- SFL Teacher: **Robin Andrews**

**Spylaw**

- Community Head: **Bob Shankland**
- PSL for all year groups ending in S1/2/3: **Tania Peters**
- PSL for all year groups ending in S4/5/6: **Elisa Kerr**
- SFL Teacher: **Anne Campbell**

Depute Headteacher  
for Pupil Support:  
**Ian Porter**

Support for Learning  
Leader:  
**Rob Cockcroft**



## PARTNER AGENCIES

The SfL department liaise with a range of outside agencies to further support pupils with ASNs

- Creative Natives
- Edinburgh College
- Love Gorgie
- Canongate Youth
- ASL Service
- NHS / CAMHS
- Outdoor Education providers
- Barnardo's
- Enable

[illegible]





# IN ADDITION...

RAINBOW SHEETS P7-S6 (updated 4 times a session)

SEBD - ASfL – EAL – Health/Medical – Young Carers – Attendance –  
SIMD – FSM – Care Experienced

SMHFA

LIAM

SCHOOL COUNSELLOR

SCHOOL NURSE

WEBSITE - SIGNPOSTING



## NEXT STEP

### WELLBEING HUB

- Pupil is at risk of exclusion
- Pupil is on flexible/alternative timetable
- Pupil is not able to access specific classes due to anxiety/social difficulties
- Pupil is experiencing emotionally-based school refusal
- Pupil is transitioning into school with support in WBH as part of phased integration
- There may be other factors taken into account when placing a pupil in the Wellbeing Hub.





NEXT STEP

SENIOR DEVELOPMENT  
OFFICER

- The development and expansion of current mental health and wellbeing supports available for our most vulnerable young people

# SUPPORTING OUR PUPILS



In summary

- The key is to identify an additional support need
- Share the information with the relevant people
- Plan to minimise barriers to their learning
- Monitor and evaluate the effectiveness of these plans

We must try and work together to build a team around any child with ASN.



# GLOSSARY

PSL = Pupil Support Leader

SfL = Support for Learning

ASN = Additional Support Needs

ASL Service = Additional Support for Learning Service

CAMHS = Children and Adolescent Mental Health Services (now referred to as children and young people's mental health services cypmhs)

SEBN/D = Social Emotional Behavioural Needs/Difficulties

EAL = English as an Additional Language

SIMD = Scottish Index of Multiple Deprivation



# GLOSSARY CONTINUED...

FSM = Free School Meals

SMHFA = Scottish Mental Health First Aid

LIAM = Let's Introduce Anxiety Management

WBH = Well-Being Hub